

Harwich  
Haven  
Authority

[www.hha.co.uk](http://www.hha.co.uk)

2009

No. 07

# NOTICE TO MARINERS

## HARWICH HARBOUR

### FELIXSTOWE SOUTH RECONFIGURATION WORKS – PHASE VI

Mariners are advised that Phase VI of the works will involve:

- Dredging and boulder removal operations will be undertaken within the Harwich Shelf Works Area.
- Hydrographic survey, diving and obstruction removal operations will be undertaken within the Felixstowe South Reconfiguration and Harwich Shelf Work Areas.
- FSR Quay Infill Operations from the planned quay line landwards via dredger pumping stations with material from external sites or transfer from the Harwich Shelf Work Area.
- FSR Quay Piling operations along the new quay line.

All Mariners are advised to maintain a listening watch on VHF Channel 71 (Harwich VTS) for regular broadcasts and any specific Operational or Navigational requirements.

#### 1) **Exclusion Zone - Felixstowe South Reconfiguration Works Area.**

An Exclusion Zone known as the Felixstowe South Reconfiguration Works Area is established for the landward area bounded by:

- A)** 51° 57'.08N 001° 18'.92E - Felixstowe RoRo 3 berth
- B)** 51° 57'.06N 001° 18'.67E - Green marker buoy
- C)** 51° 56'.63N 001° 18'.91E - Green marker buoy
- D)** 51° 56'.68N 001° 19'.14E - Landguard quay bollard 10

The Felixstowe South Reconfiguration Works Area is marked at the northern limit by a lit green marker buoy Q FI G in position 51° 57'.06N 001° 18'.67E and the southern limit is marked by a lit green marker buoy FI G 2.5s in position 51° 56'.63N 001° 18'.91E and a white quay marker in the vicinity of bollard 10 on Landguard Quay.

No vessels other than authorised construction vessels shall enter or pass through this area.

All vessels when navigating in the vicinity of the Felixstowe South Reconfiguration Works Area must:

- a) Proceed at minimum speed possible conducive with safe navigation.
- b) Navigate with extreme caution.
- c) Not impede large or ultra large vessels in the vicinity of the Works Area.
- d) Maintain a minimum distance of 100m from any piling craft working on the planned quay line.

## 2) Exclusion Zone – Harwich Shelf Works Area.

On or about the 1<sup>st</sup> April 2009 an Exclusion Zone known as the Harwich Shelf Works Area will be established for the landward area bounded by:

- A) 51° 57'.08N 001° 17'.86E - Guard Buoy
- B) 51° 56'.85N 001° 18'.19E - Yellow Buoy FI Y 3s
- C) 51° 56'.46N 001° 18'.41E - Yellow Buoy FI Y 3s
- D) 51° 55'.71N 001 ° 18'.54E - Cliff Foot Buoy
- E) 51° 56'.68N 001 ° 18'.59E - North Shelf Buoy
- F) 51° 56'.89N 001 ° 18'.33E - Grisle Buoy

The Harwich Shelf Works Area is marked by the existing channel buoys to seawards and by two yellow marker buoys on the landward side.

On or about the 1<sup>st</sup> April 2009 two yellow buoys FI Y 3s will be established in positions 51° 56'.85N 001° 18'.19E and 51° 56'.46N 001° 18'.41E marking the landward edge of the Harwich Shelf Works Area.

No vessels other than authorised construction vessels shall enter or pass through this area.

All vessels when navigating in the vicinity of the Harwich Shelf Works Area must:

- a) Proceed at minimum speed possible conducive with safe navigation.
- b) Navigate with extreme caution.
- c) Not impede large or ultra large vessels in the vicinity of the Works Area.
- d) Maintain a minimum distance of 100m from any dredging craft working on the channel widening.

## 3) Dredging Operations

On or about the 1<sup>st</sup> April 2009 channel widening will commence with dredging operations within the Harwich Shelf work area and continued dredging operations within the with Felixstowe South Reconfiguration work area with the dredgers *Crestway*, *Barent Zanen*, *Brabo* and *Oranje* assisted by the plough dredger *Norma* for a period of approximately 9 months.

The dredging operations will be supported by the stationary Backhoe Dredger *Maricavor* and split hopper barges *Longsand*, *Corksand*, *Terraferre 301* and *Terraferre 302* assisted by tugs and other support vessels.

Underwater obstruction recovery and inspection works are supported by support vessels such as multicat *Lesley M* and survey vessels *Geo Explorer* and *Shamrock*.

Plough dredging operations within the Harwich Shelf works area will be undertaken with the *Norma* for a period of approximately 9 months.

All vessels when navigating in the vicinity of the Harwich Shelf Works Area must maintain a minimum distance of 100m from any dredging craft working on the channel widening.

**4) Quay Infill Operations**

Infill operations from the planned quay line landwards will continue with material being placed using fixed shore connections by dredgers *Brabo*, *Crestway*, *Barent Zanen* and *Oranje*.

The dredger connection to the floating pipe line will be stationed at three positions within the Felixstowe South Reconfiguration works area during the infill operations. Two of the connection positions are landward of the planned quay line, with the third positioned at the northern end of the works area between the planned quay line and the limit of the works area.

**4) Quay Piling Operations**

Quay piles will be delivered by the vessels to Landguard Terminal at regular intervals for approximately 6 months.

Piling operations will continue to be undertaken with the crane barges *Atlas* and *Stemat78*, barges *Costain 12* and *Costain 14*, multicat *Forth Boxer* and *Hope Enterprise* positioned along the new quay line for a period of approximately 6 months.

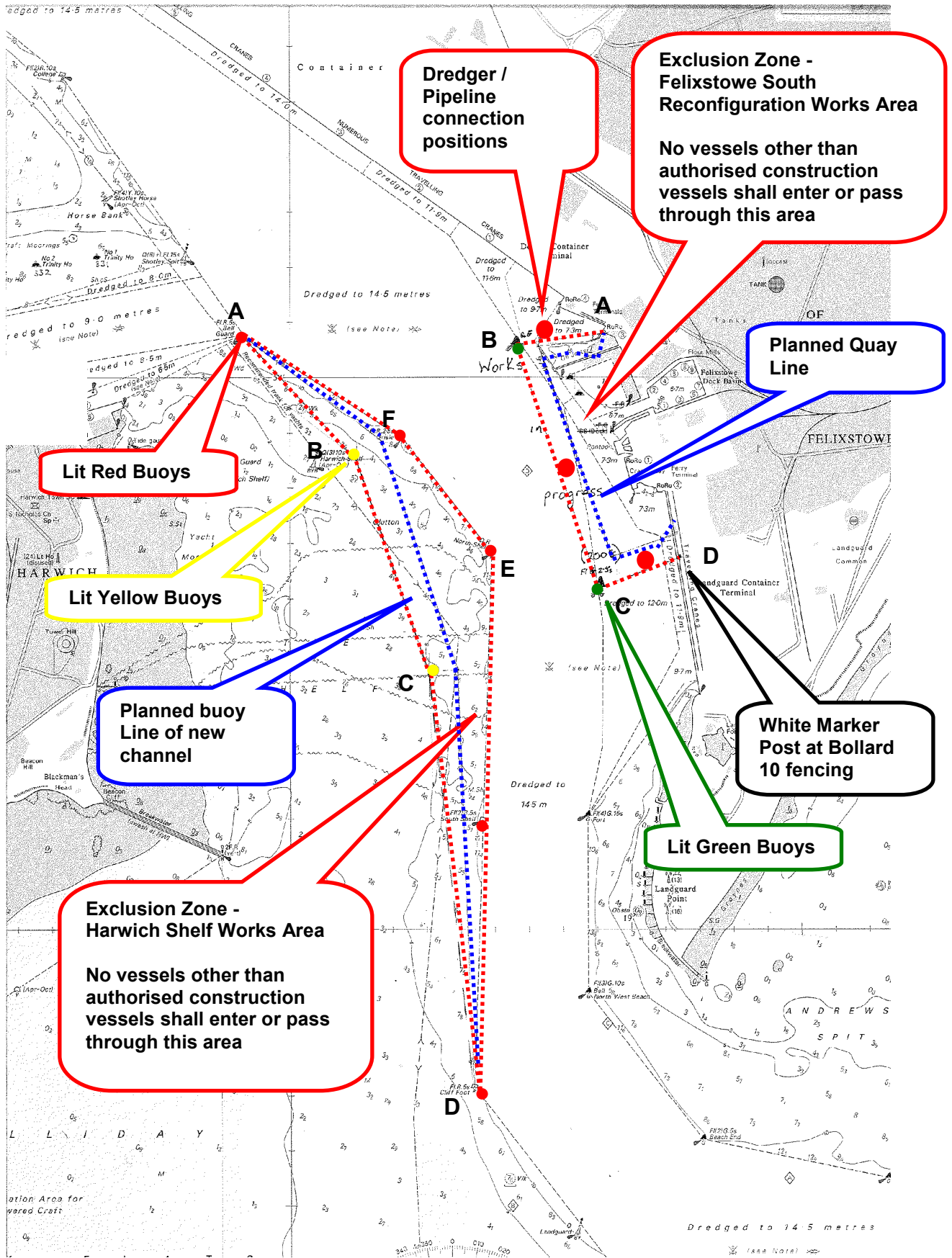
During the piling operation the construction plant and craft will be positioned seawards of the planned quay line. The construction crafts securing anchors marked by pellet buoys may extend up to 50m seawards of the Felixstowe South Reconfiguration works area.

All vessels when navigating in the vicinity of the Felixstowe South Reconfiguration Works Area must maintain a minimum distance of 100m from any piling craft working on the planned quay line.

**5) Vessels Engaged in the Works**

All vessels engaged in the works will display lights and shapes as required by Collision Regulations and will be exhibited throughout with a listening watch maintained on VHF Channel 71 on all vessels involved in the works.

Detailed dredger movements and operations can be obtained from Harwich VTS on VHF Channel 71.



**THIS NOTICE SUPERSEDES No. 04-2009**  
**NOTICE TO MARINERS No. 04-2009 IS CANCELLED**

20<sup>th</sup> March 2009

Capt C Brand  
Harbour Master

**LOCAL NOTICES CURRENTLY IN FORCE**

**2008** - 04,15,33,39,41: **2009** – 01,02,03,05,06,07

<b>Harwich Haven Authority</b>	<b>Notice to Mariners</b>	<b>Ops 004</b>
20.03.09	Felixstowe South Reconfiguration Works – Phase VI	07-2009